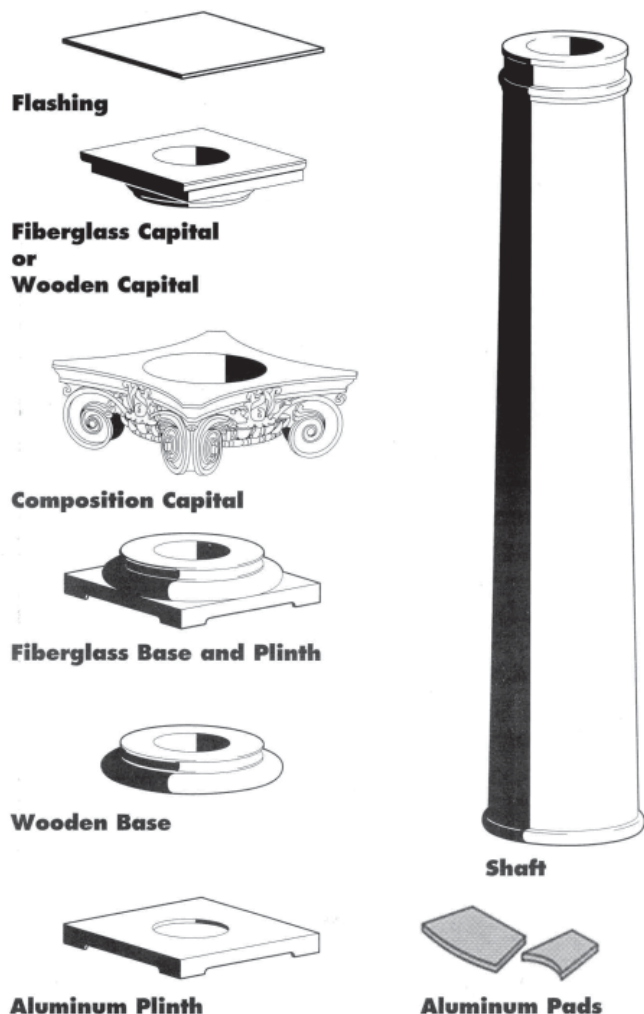


Installation Instructions for Wood Columns

Component List



WARNING

This shipment must be opened and inspected for concealed damage or shortage within 10 days or receipt. If this is not done, any claim may be denied.

Please use the following procedures when receiving any product from Somerset Door & Column Company:

1. Inspect all packages or crates for dents, punctures, flattened corners, short counts, etc.
2. If obvious damage is found:
 - **Note these discrepancies on the carrier's freight bill and have the carrier's driver initial them.**
 - **DO NOT throw away any packaging or crating!** The carrier may require an inspection of all packaging and crating.
 - **Call Somerset Door & Column Company immediately at (800) 242-7916.** Somerset will file any claims with the carrier and arrange an inspection if needed.
3. If there is obvious loss or short counts:
 - **Note these discrepancies on the carrier's freight bill and have the carrier's driver initial them.**
 - **Call Somerset Door & Column Company immediately at (800) 242-7916.** A waiting period of 3 working days may occur before any claim will be filed. The missing freight may be located before the consignee has suffered any real damage.
4. If concealed damage is found:
 - **DO NOT throw away any packaging or crating!** The carrier may require an inspection of all packaging and crating.
 - **Call Somerset Door & Column Company immediately at (800) 242-7916.** Somerset will file any claims with the carrier and arrange an inspection if needed.
 - Please refer to warning at top of page and yellow sticker on packaging or crating.
5. If all product checks OK:
 - Please refer to page #3 of this Installation Instruction for Storage and Handling guidelines.

Also Needed

Non-corrosive pins - 2 per column unless using aluminum plinth	
High quality caulk	High quality wood filler
Glue	Paint
Screen	Non-corrosive fasteners (See page 7)

If you are using split bases, shafts and capitals, be sure to mark each set so that you can keep the matching halves together later on, during assembly. Do not unband split for re-assembly shafts before ready to install.

Table of Contents

Components List	2
Final Instructions	7
Installation	4-8
Re-assembly of Split Columns	6
Receiving	2
Storage & Handling	3
Venting	3
Warranty	9

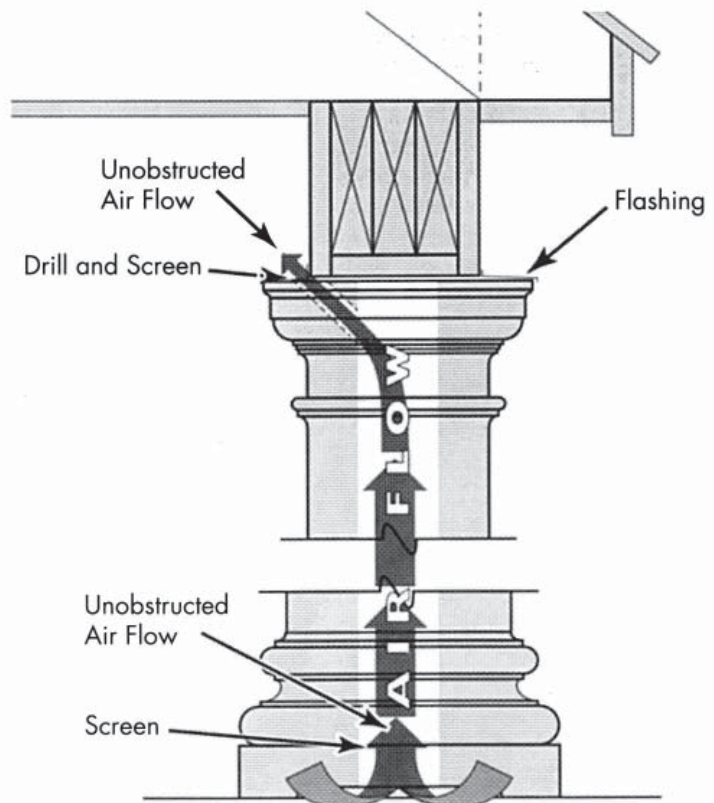
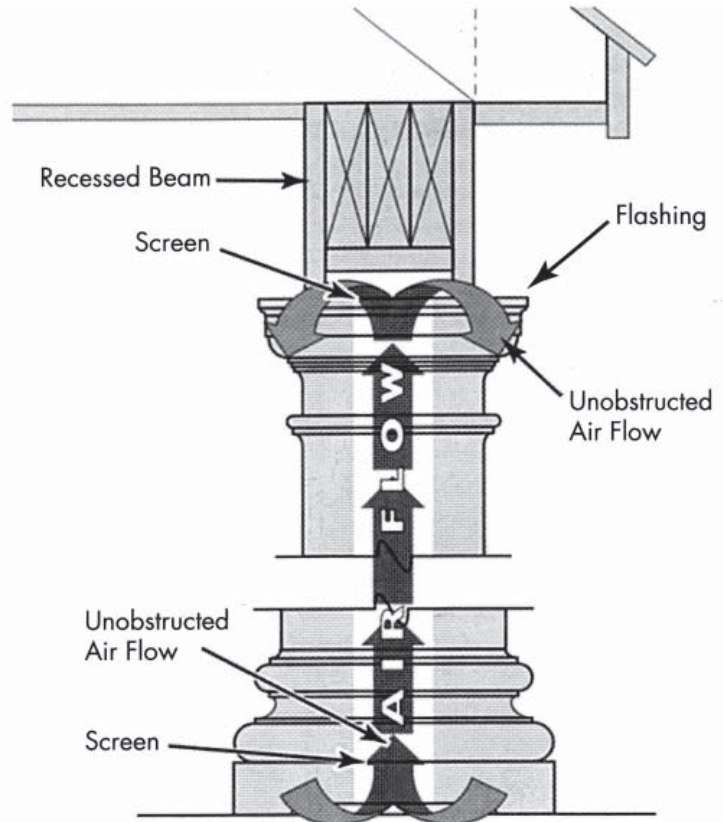
Ventilation, Storage & Handling Instructions

Ventilation must be provided at the top of the column by the installing contractor. Continuous air circulation up through the column is an absolute necessity. All warranty claims will be void if columns are not properly ventilated. To figure the minimum total opening required at the top and bottom of the column, divide the bottom shaft diameter by two. This will give you the minimum square inches required at top and bottom. For example, an eight (8) inch bottom diameter column would require four (4) square inches of ventilation at both the top and the bottom. At right on this page are details showing the two acceptable methods of venting. Any other method is not acceptable and would void the warranty.

Storage & Handling Instructions

If it is necessary to store column components, it must be in a dry, well ventilated area preferably in an upright position.

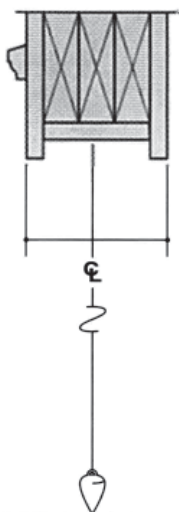
- **DO NOT STORE** under plastic, directly on the ground, concrete or masonry. You must have air circulation to prevent condensation from forming on wood components.
- **DO NOT UNBAND** split columns or separate components until ready for installation.
- Coat all interior and exterior surfaces of plaster composition capitals with two coats of a high quality oil based primer. This should be done before storage.
- All column components to be stored over 30 days should have at least one coat of finish paint before storing. If not, the primer will need to be sanded well and reprimed with a high quality primer appropriate for the application before the finished coats of paint are applied.
- If columns are for exterior and have not been coated at the factory, apply asphaltum roof coating to the inner walls of the shaft, wood base and wood capital.
- Hardwood columns that are received unprimed should be coated inside and outside simultaneously with the same sealer and the same number of coatings directly after unpacking and before installation.



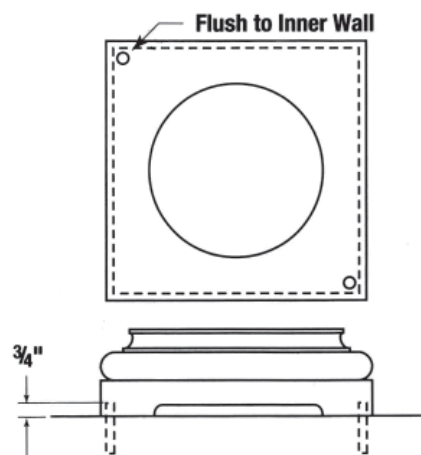
Installation

- Fiberglass plinths, aluminum plinths, or aluminum pads must be used to provide ventilation and act as a barrier against concrete or masonry.

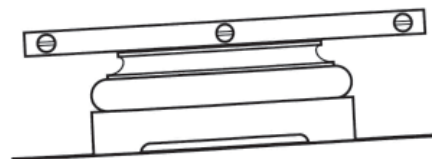
1 Drop a plumb line from the center of the beam to the deck to determine the position of the center point of the plinth so that the column capital will align properly with the beam.



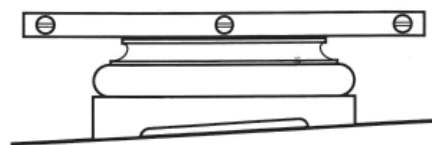
2 Set two non-corrosive setting pins in the deck on diagonally opposing corners so when installed, they will be flush against the inner wall of the plinth. Allow them to protrude $\frac{3}{4}$ " from deck to prevent the plinth from shifting. Aluminum plinths are manufactured with pins at each corner. Drill holes in the deck for these pins. Setting pins can be cut in $\frac{1}{4}$ " to $\frac{3}{8}$ " lengths from aluminum or brass rods which can be purchased at a building supply, hardware center or welding shop.



3 Set the plinth over the pins and check for levelness. Scribe the plinth and use a fine tooth hand saw, hack saw or grinder to trim if needed. It is very important that you maintain the same ventilation area originally provided by the plinth.



4 Reset assembly over dowels and re-check level.



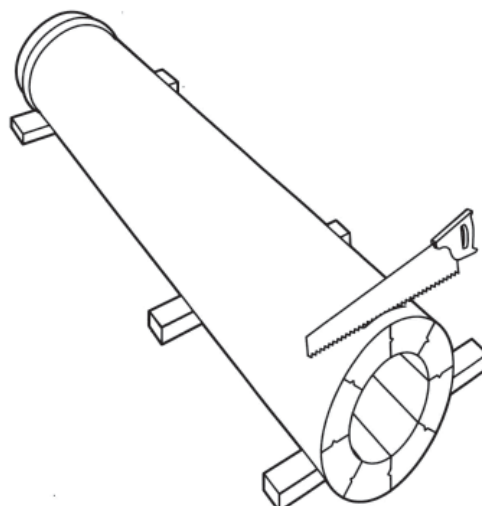
5 For columns without plinths, follow the same procedure to level the shaft. Reseal the trimmed area with a high-quality oil base paint. Attach aluminum pads with non-corrosive fasteners before erecting shaft. Maintain space between pads for ventilation.



6 To prepare the shaft for installation, neatly trim the raw ends from the shaft up to the molding or on the kerf marks. After trimming paint all raw ends with a high quality oil base paint.

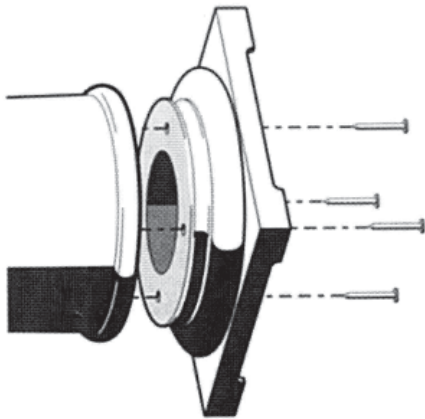
If shaft needs to be trimmed to exact height and is one of our designs that can be trimmed or has been ordered for trimming, measure the distance from the finished beam to the finished floor at the center of where the column will stand to determine the overall height of the column. Measure each column location for variations. Include the heights of the plug when

measuring columns with ornamental capitals. The shaft length should be trimmed so the height of the capital (w/plug for ornamental capitals) base and plinth plus the new shaft length will equal the overall height. Always trim from the bottom of the shaft. Measure 4 or 5 places around the circumference of the column shaft to obtain an accurate bottom trim line. Use a length of steel banding or something similar to wrap around and scribe a cutting line. After trimming, coat exposed end grain with two coats of oil base paint for exterior and appropriate sealer for interior columns immediately after cutting.



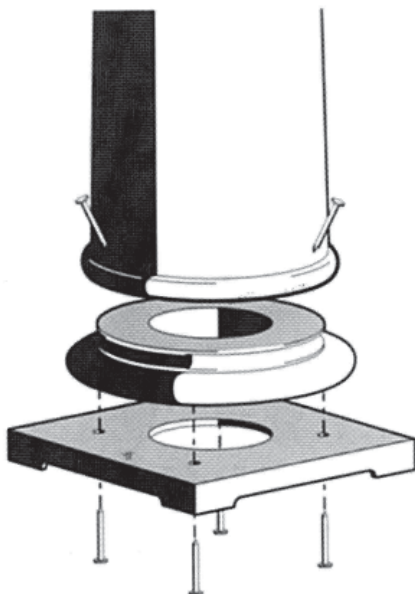
Installation

7 Apply a high quality caulking to the base where the shaft will rest. Position the base on the shaft and pre-drill for fasteners through the base and into the shaft. Secure the base to the shaft using non-corrosive fasteners.

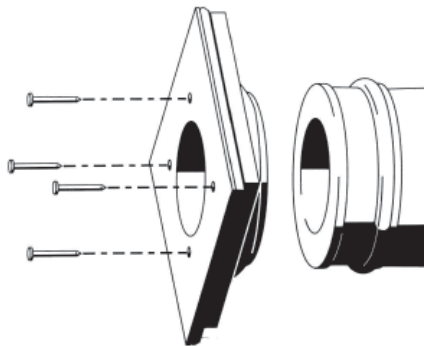


If attaching wood base with aluminum or fiberglass plinth, pre-drill for non-corrosive fasteners through the plinth into the base, apply caulking where the base will rest on the plinth and attach plinth.

(Illustrations show smaller column assembled in horizontal position, larger column assembled in vertical position.)

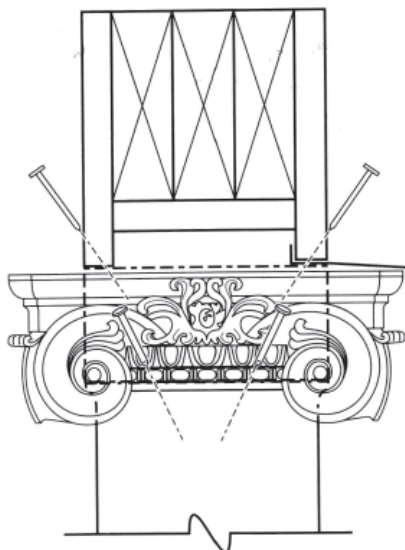


8 When attaching capitals, make sure base squares and capital squares are lined up. Apply caulking to capital where it will rest on the column. Pre-drill for fasteners through capital shaft or up through shaft at a diagonal into capital. Secure with non-corrosive fasteners.

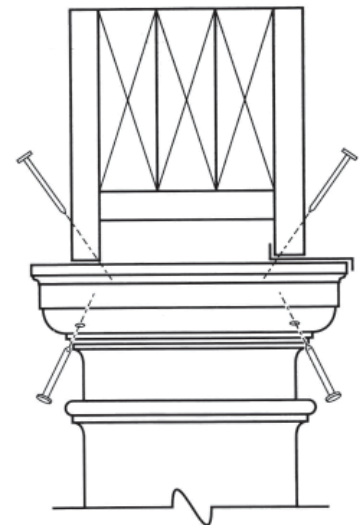


Attaching Composition Plaster Capitals

9 Composition plaster caps need a load bearing plug inside so no load rests on the capital. Plugs are enclosed with orders that include composition caps with the exception of those split for re-assembly. Columns with a neck diameter of 5" or greater will have a double ring on one end of the plug. This end will insert into the top of the shaft and be secured by nailing before the column is raised into a vertical position. The plug will be 1/8" to 3/8" taller than the capital.



Coat all inner and outer surfaces of the capital with a high quality oil base primer and finish paint. When dry, position the capital over the plug and apply a bead of caulk to the bottom of the cap where it will rest on the shaft. Pre-drill through the capital into the plug and secure with non-corrosive fasteners. Holes in the capital should be countersunk so repairs can be made with patching plaster. Place flashing over capital that is exposed to weather and turn down the edges to form a drip edge. Maintain required opening for ventilation at the top. Please keep in mind unfinished composition capitals cannot get wet before, during or after installation or they will not hold paint and will deteriorate rapidly.



Installing the Column:

10 Place flashing over the capital where it will be exposed to weather and bend the edges down to form a drip edge. Raise the beam so the base, shaft and capital can be placed on the deck. Caulk the beam where it will rest on the flashing and lift the column into position. Lower the beam onto the column and attach it to the capital (or plug). Use shims to lock the capital in place if the beam cannot be raised. For columns that are assembled in the vertical position, you will position the base as described before sliding shaft into position. Place the cap on top, caulk and flash as described above.

Stavecast Square Post Installation

1 Measure opening in four places where each corner of the column will rest. Transfer measurements to the columns.

2 Use an abrasive saw blade with a standard skill saw to cut to length. Fine tune with a course rasp to assure flat surface contact and remove sharp edges that can chip off when being slid into place.

NECK MOULD INSTALLATION:

3 Slide the neck mould to the top of the columns. Using a square, draw a line around the column where the neck mould is to be installed. Position the neck mould on the line and use tape to hold in place. Apply caulk to the top and bottom of the neck mould. Do not remove tape until the caulk is dry.

CAP INSTALLATION:

4 Slide the cap onto the top of the column. Apply construction adhesive to the backside of the cap where the cap and column shaft meet. Caulk should be applied to the outside before painting.

5 Slide the base up on the shaft of the column and move into position to be installed. Be careful not to wedge to base at an angle on the shaft. A small cedar shim slipped in between the bottom of the base and the shaft (thick end of the shim down) will ensure it does not fall off while moving column around. This will also prevent cracking the top edge of the base as you move the column into place.

6 Once column is in position, make sure the load is centered on the column shaft and evenly distributed around the load bearing area. You may want to lower the base temporarily to check alignment with the front edge of the porch.

7 Apply construction adhesive around the top and bottom surfaces of the column.

8 Remove temporary post and allow weight to settle on the column.

9 Mark and pre-drill holes in the column for the angle brackets to be attached at the bottom of the shaft. Be sure to use proper fastener for the base the column is resting on. Short angle brackets will be less likely to stick out beyond the base once in place.

10 Mark and pre-drill holes in the cap at a 45-degree angle to run screws into overhead structure to secure in place. Galvanized or stainless deck screws are recommended.

11 Apply construction adhesive to the bottom of the base and set in position. Screw holes can be filled with caulk or Bondo.

PAINTING:

12 Sand with 100 grit sanding sponge to rough up surface. Caulk around the base and paint with high-quality latex or oil primer. Finish with the appropriate latex or oil exterior paint.

NOTE: ALL HOLES MUST BE PRE-DRILLED

Stavecast Round Column Installation

1 Measure opening where the column is to be installed. If there is a pitch for water runoff on the porch, be sure to measure the pitch and cut the column so that the bottom makes contact all the way around the base of the column. A plumb bob will help determine where the base of the column will rest.

2 Use an abrasive saw blade with a standard skill saw to cut to length. Fine tune with a course rasp and remove sharp edges that will chip off when being slid into place.

3 If this is a replacement job, cut a 4x4 3/8" longer than the opening. Wedge the 4x4 between the floor and the header, taking the load off the column to be replaced so that it can be removed.

4 Place the capital on top of the column and slide base a foot or so up the column and wedge it in place from the bottom with a cedar shim. This will prevent the base from falling down the shaft when settling it in position.

5 Before removing the 4x4 prop, be sure the header is going to rest on the column shaft that projects up through the capital. The load must rest on the shaft.

6 When the column is in place, tap the prop partially out so that the header makes contact with the column. At this time make a check with a level to make sure the column is straight. Remove cedar shims from the base and let it rest on the ground. Be sure to place the level near the bottom of the column and not on the taper.

7 Remove the prop the rest of the way. Mark and pre-drill holes for angle brackets at the bottom of the column. Be sure the drill bit is not too big or small for your screws by testing one in a piece of cut-off column.

8 Line up the capital and pre-drill and counter-sink four holes that will secure the top of the column to the header. Install galvanized screws.

9 Apply construction adhesive around the base of the column and on the bottom of the decorative base and put into position.

10 Apply adhesive caulk around the cap and base where it meets the column shaft.

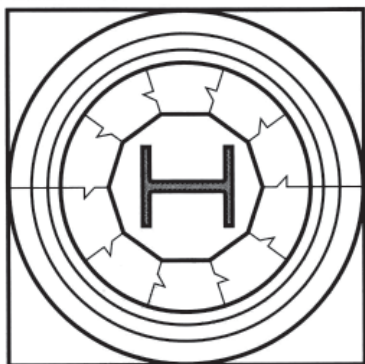
PAINTING:

11 Sand column with 100-grit sandpaper or a sanding sponge to prepare surface for a high-quality latex or oil primer. Finish with the proper finish coat.

NOTE: ALL HOLES MUST BE PRE-DRILLED

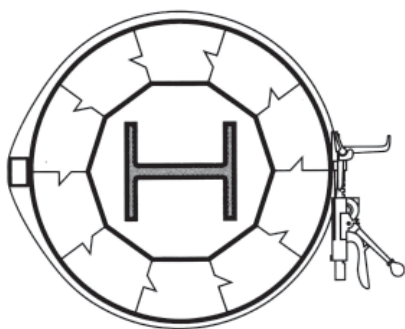
Re-assembly of Split Column Shafts

- Do not unband or separate halves until ready to install. Separate and install immediately to assure proper halves are kept together and minimize warping.
- Use appropriate adhesive for joining wood components. Type I or Type II for exterior use; Type II or Type III for interior use.



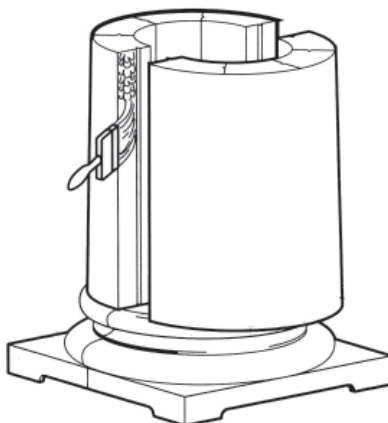
- Where possible, keep all seams to the side of the front view.
- A kit is included for fiberglass components.

1 The two-piece wood plinth, base and cap are installed as one-piece. Halves are joined with appropriate adhesive and non-corrosive fasteners. Fiberglass plinths, bases, and caps are re-assembled with plates and studs which are attached underneath. Seams in the aluminum plinth can be patched with body putty.

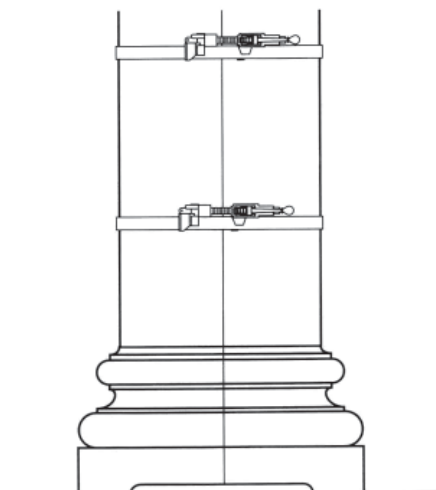


2 Natural stresses in the wood can change the roundness of the shaft once it is unbanded. Be prepared to place blocking at a point opposite any area appearing elongated to pull the shaft into round while banding. Do not remove banding until ready to install. Reband as soon as possible.

3 Use caulking beneath halves, then place them on base. Align the tongue and groove joints leaving a gap between halves. Completely cover the joints of both halves with appropriate adhesive; Type I and Type II or Type II and Type III. Carefully slide the halves together.



4 Starting at either end, place steel banding every 6"-12" along the length of the shaft. Strips of carpet or similar material placed beneath the banding will help prevent damage. Tighten the banding with banding tensioner until you have tight joints with no gaps. Refer to item #2 if you experience any open joints. Check for complete contact all along the joint, then remove excess glue. Let stand for a minimum of 24 hours. Clamping time under cool or moist conditions may change. Consult adhesive manufacturer for recommendations. Use blocking, adjust clamps or tap along joint seam with a rubber mallet to pull columns into round.



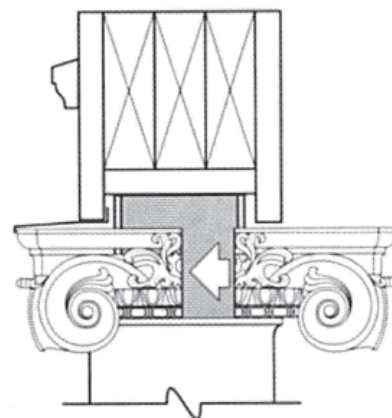
5 Fill any gaps along seam of shaft, base and capital with high quality wood filler. Sand smooth with fine sandpaper, prime and seal with appropriate sealer.

Made in Half - Composition Plaster Capitals

6 While unpacking the capitals, keep the halves matched as they were shipped. Number the halves as you unpack to keep them together. Seal the cut faces with shellac prior to gluing. Refer to composition capital installation for sealing information. Also, see instructions supplied with the capitals.

7 Center the half capital on the column and secure by pre-drilling for fasteners through the capital into the shaft or existing structure. Countersink the fasteners.

8 Apply adhesive to the first capital half after it is secured. Position the other half into place and secure by pre-drilling holes and countersinking fasteners. Also see instructions supplied with cap.



9 Patch the seams with molding plaster or any pre-mixed plaster compound. Sand excess from joints when plaster is completely dry.

10 Place flashing over the exposed area of the capital and bend the edges down for moisture protection. Caulk the seam above the capital at the beam and below at the shaft before applying primer and two coats of oil base paint. Always keep in mind these unfinished capitals cannot get wet before, during or after installation or they will deteriorate. See instructions supplied with capitals.

ONE-YEAR WOOD COLUMN WARRANTY

Somerset Door & Column Company (SDC) warrants its wood columns (excluding redwood) will be free of manufacturing defects, joint separation and rotting for a period of one (1) year after purchase when used with aluminum or fiberglass plinths, providing columns are: (a) protected on the jobsite and not exposed to extreme weather conditions prior to installation; (b) coated with asphaltum on the interior of the shaft at least three (3) feet up from the bottom; (c) installed, sealed, painted and ventilated* in accordance with SDC installation instructions. Should replacement be necessary under this warranty, the sole remedy shall be limited to furnishing new shafts, caps, bases and/or plinths to replace any defective component. Field assembled joints, on re-assembly of split columns, are not warranted. In addition, SDC does not warrant merchantability nor does it warrant that the products covered herein are expressly suited for any particular purpose. There are no other warranties, either implied or expressed, other than that which is contained in this document. This warranty only covers columns produced after February 29, 2000.

**See reverse side for ventilation instructions.*



174 Sagamore Street • Somerset, PA 15501

Representing Somerset Door & Column Co.

Warranty No. _____

Date _____

Site Inspection

I _____
Name
of _____
Firm Name

Firm Address _____

have inspected the job site at _____

Street Address _____

City _____

State _____

Zip _____

and found these columns to be properly installed and ventilated.

Signature _____

Date _____

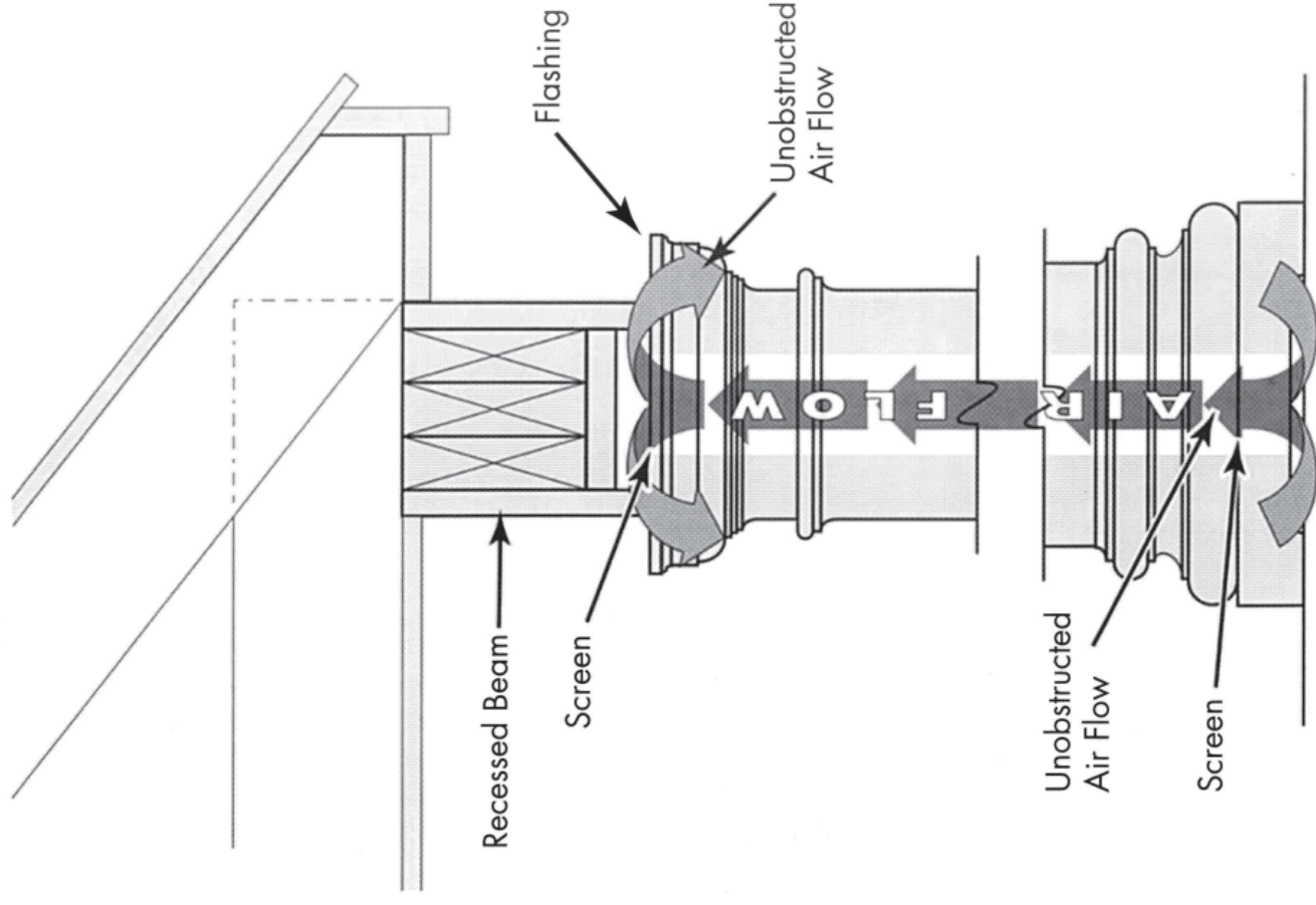
This warranty must be completed and returned to the manufacturer for warranty to be in effect.

VENTILATION INSTRUCTIONS

Proper ventilation (air flow) is the most important factor in the life of a wood column. We have learned through many years of experience that venting should be done at the top of the column through the center of the cap and flashing into a recessed beam or soffit (see detail). Using louvers or venting directly into the beam or soffit is not adequate for proper air flow. When leveling plinths, be careful to retain sufficient space for ventilation.

VENTILATION MUST BE PROVIDED AT THE TIME OF INSTALLATION BY THE CONTRACTOR. SOMERSET DOOR & COLUMN CO. (SDC) WILL ONLY WARRANT COLUMNS THAT HAVE BEEN PROPERLY INSTALLED WITH A RECESSED BEAM AND WITH OPEN PLINTH VENTS AS SHOWN.

In addition to these ventilation instructions, good workmanship and adherence to SDC installation guidelines will be required for this warranty to be effective.



Final Instructions

Nailing

- Use non-corrosive fasteners; either nails or screws. Stainless steel, aluminum alloy or galvanized are acceptable.

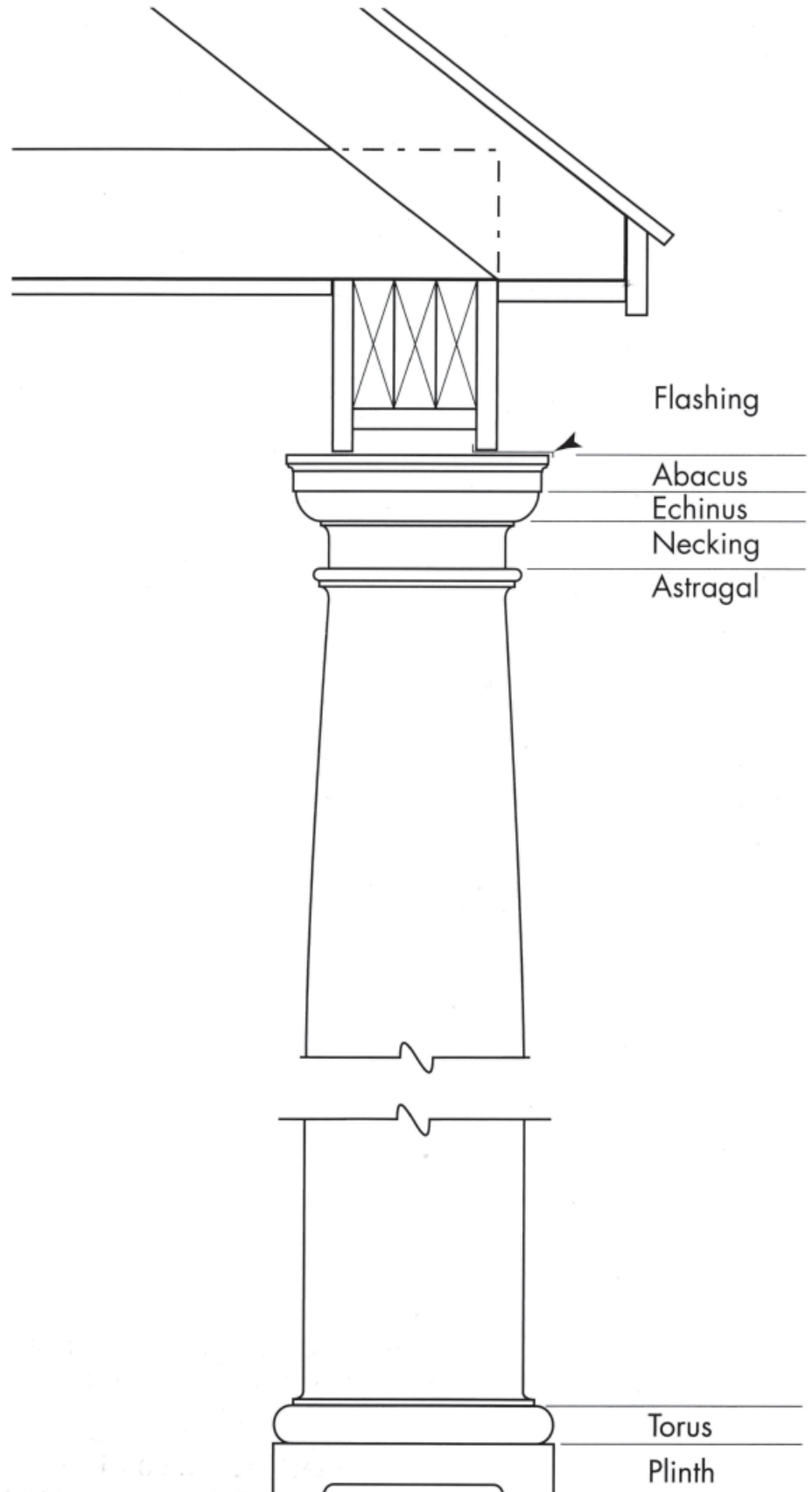
11 Do not install wood blocking or any other obstruction to the interior of the column.

Finishing Instructions

12 Caulk all fastener holes and repair any dents or nicks which occurred during installation with a high quality wood filler. Use patching plaster to repair any nicks or scratches in ornamental composition capitals. Fiberglass components can be repaired with auto body repair kits.

13 Apply a minimum of two coats of high quality appropriate paint to all exterior surfaces immediately after installation. See paint manufacturers recommendations for proper paint application.

14 The same procedures would apply for interior applications. All surfaces inside, outside and ends should be sealed simultaneously with the same sealer.





174 Sagamore Street • Somerset, PA 15501
800-242-7916 • 814-444-9427
Fax 814-443-1658

visit our website at
www.doorandcolumn.com